

MEMORIAL STADIUM – NORTH CONCOURSE VIDEO BOARD REPLACEMENT

ADDENDUM #01

TO CONTRACT DOCUMENTS FOR: Project #CP241291
ADVERTISEMENT DATE: March 27, 2024
PREPARED FOR: The Curators of the University of Missouri
CONSULTANT: POPULOUS
4800 Main Street, Suite 300
Kansas City, MO 64112
(816) 221-1500

The Contract Documents for the above noted project and work covered thereby and herein modified.

GENERAL INFORMATION:

- 1) Bids for this project will be received by the Curators of the University of Missouri, Owner, at Planning, Design & Construction, Room L100 (Front Reception Desk), General Services Building, University of Missouri, Columbia, MO 65211 until **10:30a.m.**, CT, April 18, 2024 and then immediately opened and publicly read aloud.

- 2) Video Board Installer Qualifications:
 - a. No less than three years' experience with equipment and systems of the specified types.
 - b. Experience with at least three comparable scale projects within the last three years.
 - c. Adequate staff with commensurate technical experience and ability to meet the project schedule.
 - d. Adequate regional service organization to meet warranty response requirements of the Project.
 - e. Provide listing with appropriate explanation regarding the status of Contractor's resolved or unresolved legal disputes within the last six calendar years.
 - f. Provide listing with appropriate explanation regarding any projects within the last three years where the Contractor has failed to meet construction schedules due to Contractor's cause.

PROJECT MANUAL:

- 1) 00 00 00 - COVER
 - a. Updated to show Addendum date.
- 2) 00 01 05 - ARCHITECTURAL CERTIFICATION
 - a. Updated to show Addendum date.
- 3) 00 01 10 – TABLE OF CONTENTS
 - a. Identifying updated Sections.
- 4) DD1320628 – DAKTRONICS PAINTING SPECIFICATION FOR STEEL AND STRUCTURAL ALUMINUM
 - a. NEW SECTION
- 5) 10 81 13 – BIRD CONTROL DEVICES
 - a. Added Bird-X, Inc.; PE Plus Premium Grade as acceptable manufacturer and product.
- 6) APPENDIX EQ-1 – OWNER-PROVIDED, CONTRACTOR-INSTALLED EQUIPMENT
 - a. NEW APPENDIX

DRAWINGS:

- 1) G001 – COVER SHEET
 - a. Updated Sheet Index to show revised sheets.
- 2) V301 – FRONT ELEVATION VIEW
 - a. Updated to show metal wall panel between top of board and new roof.
- 3) V302 – REAR ELEVATION VIEW
 - a. Updated to show metal panel extending up to new roof.

END OF ADDENDUM #01

PROJECT MANUAL FOR:

**MEMORIAL STADIUM
NORTH CONCOURSE VIDEO BOARD
REPLACEMENT**

PROJECT NO.: CP241291

AT:

**UNIVERSITY OF MISSOURI - COLUMBIA
COLUMBIA, MISSOURI**

FOR:

**THE CURATORS OF THE
UNIVERSITY OF MISSOURI**

PREPARED BY:



***PLANNING
DESIGN &
CONSTRUCTION***

**CAMPUS FACILITIES
UNIVERSITY OF MISSOURI**

WITH

POPULOUS®

**ADDENDUM-01
APRIL 12, 2024**

PART 1 - ARCHITECTURAL CERTIFICATION

1.1 CERTIFICATION

- A. I hereby certify that these Specifications have been prepared by me, or under my supervision. I further certify that to the best of my knowledge these Specifications are as required by and in compliance with Building Codes of the State of Missouri.
- B. I hereby specify that the documents intended to be authenticated by my seal are limited to:


02 41 19
05 40 00

07 41 13.16
07 42 13.13

10 81 13

1.2 PROFESSIONAL SEAL



A. Signature:  Date: 04/12/2024

THIS IS INTENTIONALLY LEFT BLANK

**MEMORIAL STADIUM
NORTH CONCOURSE VIDEO BOARD REPLACEMENT**

PROJECT NUMBER: CP241291

TABLE OF CONTENTS

| <u>TITLE</u> | <u>PAGE</u> |
|------------------------------------|--------------------|
| 00 01 05 | 1 |
| Architectural Certification | 1 |
| Electrical Certification | 1 |
| Audio-Visual Certification | 1 |
| Table of Contents | TOC/1-3 |
| | |
| <u>DIVISION 1</u> | |
| <u>GENERAL REQUIREMENTS</u> | |
| Advertisement for Bids | |
| 1.A | 1.A/1-6 |
| 1.B | BSQ/1-2 |
| 1.B.2 | SD/1-2 |
| 1.B.3 | SD/3-4 |
| 1.B.4 | SD/5 |
| 1.B.5 | SD/6 |
| 1.B.6 | SD/7 |
| 1.B.7 | SD/8 |
| 1.B.8 | SD/9 |
| 1.C | IFB/1-5 |
| 1.D | GC/1-39 |
| 1.E | SC/1-12 |
| 1.E.1 | SS/1-4 |
| 1.E.4 | SDSL/1-3 |
| 1.E.5 | OMML/1 |
| 1.E.6 | CLOSL/1 |

| | | |
|---------------------------|------------------------------------------------------------|---------|
| 1.F | Index of Drawings | INDEX/1 |
| 1.G | Prevailing Wage Rates | PW/1 |
| <u>DIVISION 2</u> | <u>EXISTING CONDITIONS</u> | |
| 02 41 19 | SELECTIVE DEMOLITION | 1-6 |
| <i><u>DIVISION 3</u></i> | <i><u>CONCRETE (NOT USED)</u></i> | |
| <i><u>DIVISION 4</u></i> | <i><u>MASONRY (NOT USED)</u></i> | |
| <u>DIVISION 5</u> | <u>METALS</u> | |
| 05 40 00 | COLD-FORMED METAL FRAMING (DELEGATED DESIGN) | 1-9 |
| <i><u>DIVISION 6</u></i> | <i><u>WOOD AND PLASTICS, AND COMPOSITES (NOT USED)</u></i> | |
| <u>DIVISION 7</u> | <u>THERMAL AND MOISTURE PROTECTION</u> | |
| 07 41 13.16 | STANDING-SEAM METAL ROOF PANELS | 1-9 |
| 07 42 13.13 | FORMED METAL WALL PANELS | 1-8 |
| <i><u>DIVISION 8</u></i> | <i><u>OPENINGS (NOT USED)</u></i> | |
| <u>DIVISION 9</u> | <u>FINISHES</u> | |
| DD1320628 | DAKTRONICS PAINTING SPECIFICATION | 1-5 |
| <u>DIVISION 10</u> | <u>SPECIALTIES</u> | |
| 10 81 13 | BIRD CONTROL DEVICES | 1-2 |
| <i><u>DIVISION 11</u></i> | <i><u>EQUIPMENT (NOT USED)</u></i> | |
| <i><u>DIVISION 12</u></i> | <i><u>FURNISHINGS (NOT USED)</u></i> | |
| <i><u>DIVISION 13</u></i> | <i><u>SPECIAL CONSTRUCTION (NOT USED)</u></i> | |
| <i><u>DIVISION 14</u></i> | <i><u>CONVEYING SYSTEMS (NOT USED)</u></i> | |
| <i><u>DIVISION 21</u></i> | <i><u>FIRE SUPPRESSION (NOT USED)</u></i> | |
| <i><u>DIVISION 22</u></i> | <i><u>PLUMBING (NOT USED)</u></i> | |

DIVISION 23

MECHANICAL (NOT USED)

DIVISION 25

INTEGRATED AUTOMATION (NOT USED)

DIVISION 26

ELECTRICAL

| | | |
|----------|-------------------------------------------------------|------|
| 26 00 10 | GENERAL ELECTRICAL REQUIREMENTS | 1-18 |
| 26 05 00 | COMMON WORK RESULTS FOR ELECTRICAL | 1-7 |
| 26 05 19 | LOW-VOLTAGE ELECTRICAL POWER CONDUCTORS AND CABLES | 1-6 |
| 26 05 26 | GROUNDING AND BONDING FOR ELECTRICAL SYSTEMS | 1-8 |
| 26 05 33 | RACEWAY AND BOXES FOR ELECTRICAL SYSTEMS | 1-11 |
| 26 05 53 | IDENTIFICATION FOR ELECTRICAL SYSTEMS | 1-5 |
| 26 05 73 | LOW-VOLTAGE ELECTRICAL SYSTEM STUDIES | 1-6 |
| 26 24 16 | PANELBOARDS | 1-7 |

DIVISION 27

COMMUNICATIONS

| | | |
|----------|----------------------|------|
| 27 41 16 | AUDIO VISUAL SYSTEMS | 1-40 |
|----------|----------------------|------|

DIVISION 28

ELECTRONIC SAFETY AND SECURITY (NOT USED)

DIVISION 31

EARTHWORK (NOT USED)

DIVISION 32

EXTERIOR IMPROVEMENTS (NOT USED)

DIVISION 33

UTILITIES (NOT USED)

DIVISION 34

TRANSPORTATION (NOT USED)

APPENDIX:

| | | |
|-----|----------------------|-----|
| E1 | ELECTRICAL NARRATIVE | 1-5 |
| EQ1 | OFCI EQUIPMENT LIST | 1-2 |

END OF SECTION

SECTION 10 81 13 - BIRD CONTROL DEVICES**PART 1 - GENERAL****1.1 SUMMARY**

- A. Section includes the following:
 - 1. Bird netting.

1.2 ACTION SUBMITTALS

- A. Product Data: For each type of product.
- B. Shop Drawings:
 - 1. Include plans, elevations, sections, and attachment details.
- C. Samples: For each exposed product and for each color and texture specified, 6 inches in size.

1.3 INFORMATIONAL SUBMITTALS

- A. Qualification Data: For Installer.
- B. Material Certificates: For netting.
- C. Sample Warranty: For manufacturer's warranty.

1.4 CLOSEOUT SUBMITTALS

- A. Maintenance Data: For bird control devices to include in maintenance manuals.

1.5 QUALITY ASSURANCE

- A. Installer Qualifications: An entity that employs installers and supervisors who are trained and approved by manufacturer.

1.6 WARRANTY

- A. Manufacturer's Warranty: Manufacturer agrees to repair or replace components of bird control devices that fail in materials, including UV resistance, or workmanship within specified warranty period.
 - 1. Warranty Period: 10 year(s) from date of Substantial Completion.

1.7 FIELD CONDITIONS

- A. Field Measurements: Verify dimensions of construction to receive bird control devices by field measurements before fabrication and indicate measurements on Shop Drawings.

PART 2 - PRODUCTS**2.1 BIRD NETTING**

- A. Products: Subject to compliance with requirements, provide one of the following:
 - 1. Bird Barrier; StealthNet.
 - 2. Nixalite of America Inc.; K-Net HT Bird Netting.
 - 3. Bird-B-Gone, Inc.; Bird Net 2000.

4. Bird-X, Inc.; PE Plus Premium Grade

- B. Netting: Ultra-violet stabilized knotted polyethylene.
 - 1. Mesh size: 3/4-inch.
 - 2. Color: Black .
 - 3. Breaking Strength: Not less than 40 lbs.

2.2 ACCESSORIES

- A. Mounting Accessories: Provide manufacturer's stainless steel mounting accessories for complete installation, including, but not limited to, bolts and nuts, tension cables, turnbuckles, fasteners, brackets, and clips.

PART 3 - EXECUTION**3.1 EXAMINATION**

- A. Examine substrates and conditions, with Installer present, for compliance with manufacturer's requirements for installation, tolerances, and other conditions affecting performance of the Work.
- B. Proceed with installation only after unsatisfactory conditions have been corrected.

3.2 PREPARATION

- A. Remove bird droppings and clean area protected by bird control devices prior to installation.

3.3 INSTALLATION

- A. Comply with manufacturer's written instructions and recommendations.
- B. Install bird netting taught, completely covering area without wrinkles, gaps, or openings, for longevity, lack of visibility, and to prevent capture of birds.

END OF SECTION

DD1320628 – DAKTRONICS PAINTING SPECIFICATION FOR STEEL AND STRUCTURAL ALUMINUM**1. Introduction:**

The written information on Daktronics Painting Specifications for steel and structural aluminum provides guidelines for subcontractors that are painting Daktronics products. Martin Senour Automotive Paints, a division of the Sherwin Williams Automotive Finishes Corporation is the OEM supplier to Daktronics Manufacturing in Brookings, SD. All subcontractors can access all Martin Senour Product Data Sheets and Material Safety Data Sheets via the Martin Senour website www.martinsenour-autopaint.com. It is the responsibility of the subcontractor to follow the recommendations, mixing ratios, and application recommendations, etc. to assure that the applied undercoats and topcoats meet Daktronics' customer expectations.

2. Paint Materials:

All paint materials applied on Daktronics Manufacturing projects will be from current batch inventory and undamaged packaging. Can batch dates should be marked on all Martin Senour cans and start with the letter "R" located on the bottom of the can. The undercoat, topcoat, solvent selection, catalyst and other required materials to complete a Daktronics project will be selected from the same paint supplier. This mandate is to assure that the complete paint system will provide maximum adhesion and product performance as recommended by the paint supplier.

Disposal of refinish materials will be in accordance with local, state and federal regulations.

3. Paint Environment:

The subcontractor shall assure that all paint products are applied in a paint facility that is conducive to applying catalyzed paint products. The facility will have a paint booth with up to date inspection records that comply with local, state and federal fire codes. Also, in accordance with NFPA 33, Standard for Spray Application Using Flammable or Combustible Materials.

All paint materials need to be applied as recommended by the paint manufacturer. Written verification by that paint manufacturers representative will be made available upon request to Daktronics. This verification assures that the application procedures are being followed correctly to assure maximum paint product performance.

All products shall be used in accordance to the manufacturer's directions listed on the product data bulletins. All products should be applied in an environment of approximately 50% relative humidity and 70 to 75 degrees Fahrenheit free of oil, silicone related impurities, moisture in the lines etc. that could affect the curing and performance of the coating.

A system of record keeping shall be made available from the subcontractor / application facility upon request. The paint process of cleaning, priming, and top coating along with minimum mil thickness readings will meet specifications for potential warranty requirements. Record keeping for the following is suggested for possible warranty purposes:

- Date of paint application
- Daktronics project number
- Product batch codes / dates
- Mixing ratios of product applied

- Dry film thickness readings of primer, topcoat and total film thicknesses taken in 5 different areas
- Paint technician applying product along with application location and maintenance records for paint spray equipment assuring oil, silicone, water, etc. is omitted from the paint materials. Booth filters replacement, compressor inspection, moisture extractors, etc.

4. Training:

Subcontractor will provide a signature approval from the paint supplier stating that the paint technician has been instructed / trained on the recommended paint products in accordance with that manufacturer's recommended paint specifications.

5. Cleaning and Preparation of bare steel and aluminum substrates:

Steel:

- Mechanical abrasion of steel to remove mil scale, rust, etc. (sandblast recommended)
- Wash with mild detergent and water, rinse well and wipe dry with lint free cloth
- Wipe surface clean with a strong solvent cleaner to remove remaining oil, greases, etc. Martin Senour #6383 KLEANZ-EASY® or equivalent
- IRON ETCH ® (Martin Senour #6878 or equivalent) can also be used to assure thorough cleaning and improved adhesion. Reference MS Product Data Sheet MA3159
- Tack Rags may be used prior to priming to aid in removing foreign material

Aluminum

- Sand substrate with 180 to 320 grit sandpaper to mechanically abrade oxidation on aluminum surface
- Wash with mild detergent and water, rinse well and wipe dry with lint free cloth
- Wipe surface with a strong solvent cleaner and clean wiping towels to remove remaining oil, greases, etc. Martin Senour #6383 KLEANZ-EASY® or equivalent
- TWIN-ETCH ® (Martin Senour #6879 or equivalent) can also be used to assure thorough cleaning and promote adhesion. Reference MS Product Data Sheet MA3151
- Tack Rags may be used prior to priming to aid in removing foreign material

Filling Materials

- Apply filling materials in accordance to manufacturer's specifications

6. Product Description:

The following Martin Senour paint systems meet Daktronics specifications and are deemed viable for use. Consulting the Product Data Sheets, MA Bulletin, on listed products below is required prior to paint product application. Equivalent competitive products may be used provided they meet or exceed product specifications listed in item 7. These products must be used in accordance with that manufacturer's application recommendation.

| Part Number | Description | Bulletin | Dry Film Build |
|------------------------|-----------------------------------------------|----------|----------------|
| <u>Cleaners</u> | | | |
| 6383 | KLEANZ-EASY® (Surface Cleaner) | MA4441 | NA |
| 6878 | IRON ETCH® (Steel Cleaner) | MA3159 | NA |
| 6879 | TWIN-ETCH® (Metal cleaner and Conditioner) | MA3151 | NA |
| <u>Primers</u> | | | |
| 5274 | Epoxy Primer (Best) | MA5016 | 1.5 to 2 Mils |
| CP400 | Epoxy Primer (Better) | MA4808 | 1.5 to 2 Mils |

Topcoats (Catalyzed 2 Part Systems)

| | | | |
|-------------|-------------------------------------------|--------|---------------|
| PRISM® | 3.5 Acrylic Polyurethane (Best System) | MA4411 | 2 to 2.5 Mils |
| Cross/FIRE® | 3.5 Urethane Enamel (Better) | MA4641 | 2 to 2.5 Mils |
| Cross/FIRE® | 3.5 Acrylic Enamel (Good) | MA4639 | 2 to 2.5 Mils |

Gloss 60-degree measurement

| | |
|------------|----------|
| Flat | 5 to 15 |
| Semi Gloss | 35 to 60 |
| Gloss | 85 plus |

7. Daktronics Minimum Product Specifications:

Performance after one-week air dry

- Impact Resistance (80 inch pounds)
 - Direct & Reverse pass
- Flexibility (1/8 " conical mandrel) pass

- Solvent Resistance (10 double rubs)
 - MEK / Xylene / Gasoline / Diesel / Oil No Effect
- Chemical resistance (24 hour covered contact)
 - 10% Hydrochloric Acid No Effect
 - 10% Sulfuric Acid No Effect
 - 10% Ammonium Hydroxide No Effect
 - 10% Sodium Hydroxide No Effect
 - 10% Phosphoric Acid No Effect
 - 10% Acetic Acid No Effect
 - Gasoline No Effect
 - Motor Oil No Effect
 - Antifreeze No Effect
 - Salt Spray Resistance – 500 Hours * No Effect
 - Humidity Resistance – 250 Hours * No Effect

*Over properly treated and Primed Metal

8. Resolution of Conflicts:

It is the responsibility of the subcontractor and / or coatings applicator to request prompt clarification of instructions prior to applying paint materials. Proper record keeping and documentation will be required at all times. Failure to comply with these requirements will negate all responsibilities of Daktronics and the paint manufacturer for potential warranty claims.

9. Subcontractor Approval:

- Approved by _____
- Company: _____
- Title _____
- Address _____
- City _____
- State _____
- Zip _____
- Phone _____

- Signature _____
- Paint Representative _____

APPENDIX EQ-1- OWNER-PROVIDED, CONTRACTOR-INSTALLED EQUIPMENT

This equipment list represents the major items that will be provided by the Owner to the installation subcontractor to facilitate a fully functioning sound and videoboard system. Additions, substitutions, or exclusions may occur from the final equipment list due to changes in product availability or changes in specific facility needs discovered during final engineering and/or installation process. This list is for informational purposes only.

Main Bowl Sound SystemLoudspeakers

- 16 - Sub218LB-WR Fulcrum Acoustic Dual 18" Subwoofer (Weather Resistant, Rear Serviceable)
- 4 - J-Box12 Daktronics 12 Conductor NEMA3 Speaker Terminal J-Box
- 4 - MOUNT Daktronics Custom Speaker Mount

Amplifiers

- 4 - IPX20:4 Dynacord 4 Channel Power Amplifier with DSP and Dante

Amplifier Racks - Power - Networking

- 1 - DAKEN-0 Daktronics 1RU Blank Panel with Daktronics Logo
- 1 - ENVR-AMPRK Custom 42 RU Environmentally Controlled Amplifier Rack with 2 Ton A/C Unit
- 1 - X-406-E Control-By-Web IP/Q-SYS enabled Temperature Monitor
- 1 - X-DTHS-P Control-By-Web Temperature and Humidity Sensor
- 1 - PowerStrip Middle Atlantic Custom Power Strip per Contract
- 1 - Net Fiber Contactor Daktronics 1RU - 2 Switch Fiber Contactor with Networking
- 1 - CUSTOM-CRP-M Custom ~150A 3 Phase Power Panel with 1 Fiber Switch Card
- 1 - FIBERPATCH 1RU 3 Bay Fiber Patch Panel
- 1 - 12POLC 12 Port LC Connector
- 1 - BE33 Ensemble 2 x 8 Distribution Amplifier (Analog Backup)
- 1 - DIN-2LI Jensen 2 Channel Input Transformer (Analog Backup)
- 3 - GS728TPv2 Netgear 24 Port Gigabit POE+ Smart Managed Switch with 4 SFP Ports
- 4 - AGM731F Netgear Multimode SFP Transceiver 1000Base-SX
- 3 - PS15-1500RT120LIN Vertiv 1500VA Lithium-Ion UPS with Q-Sys Control and Monitoring

System Processing and Control

- 1 - Core 8 Flex QSC Q-SYS Core with 8 I/O Channels & 64x64 Q-Lan Network
- 1 - SL-QUD-8N-P QSC UCI Deployment Software License
- 1 - SL-QSE-8N-P QSC Scripting Engine Software License
- 1 - SL-DAN-32-P QSC 32x32 Software Based Dante License
- 1 - TSC-70-G3 QSC 7.0" Touch Screen Control Panel
- 1 - TSC-710t-G3 QSC Tabletop mounting accessory for TSC-70-G3 and TSC-101-G3
- 1 - OPTIPLEX Dell 3 RU OPTIPLEX XE4 Computer with Middle Atlantic Custom Rack Kit

- 1 - P2418HT Dell 24" Touchscreen Computer Monitor
- 1 - RM-LCD-MT Middle Atlantic Articulating Rack Mount Kit for Touch Screen Monitor
- 1 - KM Daktronics 1RU Pull Out Keyboard Mouse Combo USB
- low-voltage wire

Videoboard Equipment

North Main Video - One (1) Outdoor Daktronics LED Video Display

- Daktronics Model: DVX-2102-13HD-7500-C-HC-924x2128
- Approximate Active Area: 39.60' high x 91.20' wide
- Pixel Pitch: 13HD
- Matrix: 924 pixels high x 2128 pixels wide

Closed Captioning - One (1) Outdoor Daktronics LED Video Display

- Daktronics Model: DVX-2102-13HD-7500-C-HC-84x812
- Approximate Active Area: 3.60' high x 34.80' wide
- Pixel Pitch: 13HD
- Matrix: 84 pixels high x 812 pixels wide

Rear Billboard - One (1) Outdoor Daktronics LED Video Display

- Daktronics Model: DVX-2102-13HD-7500-C-HC-336x1092
- Approximate Active Area: 14.40' high x 46.80' wide
- Pixel Pitch: 13HD
- Matrix: 336 pixels high x 1092 pixels wide

Daktronics Custom Control

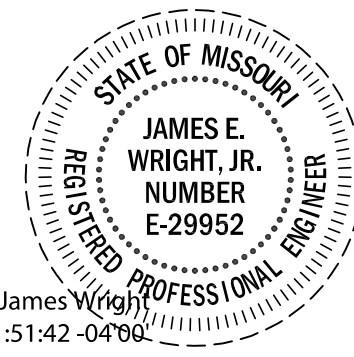
| | Performed by Owner's Representative | Performed by Contractor |
|----------------------------------------------------------------------------------------------------------------------------------------------------------------------------------|-------------------------------------|-------------------------|
| Removal and disposal of existing videoboard and sound equipment. | | X |
| Crating and shipping of all equipment to facility via common or independent carrier. | X | |
| Accept, lift, unload, and inspect all audio, videoboard and control equipment from carrier. | | X |
| Inspection for Damage and notification of Owner's Representative | | X |
| Provide storage of audio, videoboard equipment and control equipment in a safe, dry, and secure location until installation. Location as directed by the Owner's Representative. | | X |
| Unpackage and Uncrate Owner Purchased Equipment | | X |
| Rough-in/ Final Connections | | X |
| Installation Support – Videoboard & Audio Field Engineering and System Commissioning | X | |
| System Programming and Final Commissioning | X | |
| Commissioning Support | | X |

MEMORIAL STADIUM NORTH CONCOURSE VIDEO BOARD REPLACEMENT PROJECT NUMBER: CP241291

AT: UNIVERSITY OF MISSOURI - COLUMBIA, MISSOURI
FOR: THE CURATORS OF THE UNIVERSITY OF MISSOURI
ISSUE FOR BID: 03/22/2024

James E. Wright, Jr. Cornerstone Engineering, Inc. - REF D7570

I HEREBY CERTIFY THAT DRAWINGS AND/OR SPECIFICATIONS HAVE BEEN PREPARED BY ME, OR UNDER MY SUPERVISION. I FURTHER CERTIFY THAT TO THE BEST OF MY KNOWLEDGE THESE DRAWINGS AND/OR SPECIFICATIONS ARE AS REQUIRED BY AND IN COMPLIANCE WITH BUILDING CODES OF THE UNIVERSITY OF MISSOURI.
SIGNATURE: **James Wright** Digitally signed by James Wright (401) Date: 2024.03.27 11:51:42 -0400



I HEREBY CERTIFY THAT DRAWINGS AND/OR SPECIFICATIONS HAVE BEEN PREPARED BY ME, OR UNDER MY SUPERVISION. I FURTHER CERTIFY THAT TO THE BEST OF MY KNOWLEDGE THESE DRAWINGS AND/OR SPECIFICATIONS ARE AS REQUIRED BY AND IN COMPLIANCE WITH BUILDING CODES OF THE UNIVERSITY OF MISSOURI.
SIGNATURE: **Andrea C. Mulvany** Digitally signed by Andrea C. Mulvany (401) Date: 2024.03.26 10:03:26 -0400



I HEREBY CERTIFY THAT DRAWINGS AND/OR SPECIFICATIONS HAVE BEEN PREPARED BY ME, OR UNDER MY SUPERVISION. I FURTHER CERTIFY THAT TO THE BEST OF MY KNOWLEDGE THESE DRAWINGS AND/OR SPECIFICATIONS ARE AS REQUIRED BY AND IN COMPLIANCE WITH BUILDING CODES OF THE UNIVERSITY OF MISSOURI.
SIGNATURE: **Steve Sledge** Digitally signed by Steve Sledge (401) Date: 2024.03.26 10:03:26 -0400



DESIGN CONSULTANTS:

ARCHITECTURAL
POPULOUS
4800 MAIN STREET
SUITE 300
KANSAS CITY, MO 64112
816-221-1500

STRUCTURAL
CORNERSTONE ENGINEERING
1020 WILLIAM BLOUNT DRIVE
MARYVILLE, TN 37801
865-273-2688

ELECTRICAL
HENDERSON ENGINEERS
1801 MAIN STREET
SUITE 300
KANSAS CITY, MO 64108
816-663-8700

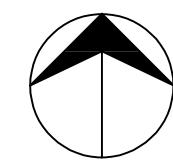
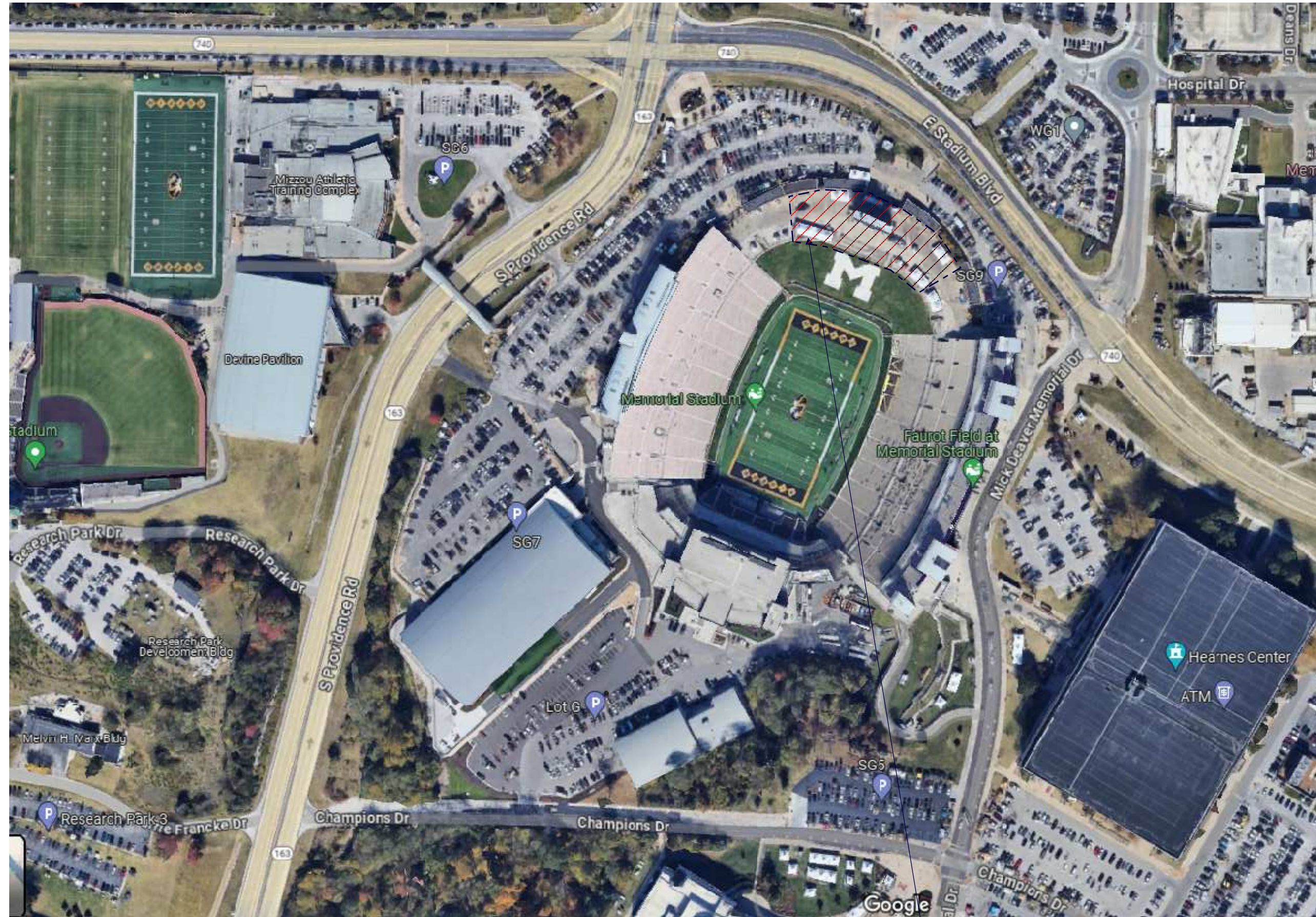
AUDIO-VISUAL
WJHW
3424 MIDCOURT ROAD
SUITE 124
CARROLLTON, TX 75006
972-934-3700

OWNER'S REPRESENTATIVE
POPULOUS
4800 MAIN STREET
SUITE 300
KANSAS CITY, MO 64112
816-221-1500

CODES & STANDARDS

UM CONSULTANT PROCEDURES AND DESIGN GUIDELINES: CURRENT EDITION

| | | | |
|----------|------|--------------|------|
| IBC: | 2021 | NFPA 45: | 2019 |
| IEBC: | 2021 | NFPA 72: | 2019 |
| IMC: | 2021 | NFPA 90A: | 2018 |
| IPC: | 2021 | NFPA 96: | 2017 |
| IFC: | 2021 | NFPA 110: | 2019 |
| IFGC: | 2021 | NFPA 150: | 2019 |
| NEC: | 2020 | ASHRAE 62.1: | 2019 |
| NFPA 13: | 2019 | ASHRAE 90.1: | 2019 |
| NFPA 14: | 2019 | ASME A17.1: | 2016 |
| NFPA 20: | 2019 | ICC A117.1: | 2017 |



SITE ACCESS & STAGING PLAN

SCALE: NTS

SITE ACCESS, JOB FENCING AND LAYDOWN AREA TO BE COORDINATED WITH OWNER'S REP AND MU

| INDEX OF DRAWINGS | | REVISION DESCRIPTION | | | | | | |
|---------------------------------|-----------------------------------------|-----------------------------|---|---|---|---|---|---|
| | | REVISION DELTA # | 1 | 2 | 3 | 4 | 5 | 6 |
| SHEET NUMBER | SHEET TITLE | 03/22/2024 BID DOCUMENTS | | | | | | |
| | | 04/12/2024 ADDENDUM-01 | | | | | | |
| G001 | COVER: DRAWING INDEX AND PROJECT NOTES | X | | | | | | |
| STRUCTURAL | | | | | | | | |
| S1 OF 6 | GENERAL DRAWINGS AND NOTES | X | | | | | | |
| S2 OF 6 | DISPLAYS | X | | | | | | |
| S3 OF 6 | FRAMING DRAWINGS | X | | | | | | |
| S4 OF 6 | NEW END FRAMING | X | | | | | | |
| S5 OF 6 | DETAILS AND ISOMETRICS | X | | | | | | |
| S6 OF 6 | DETAILS | X | | | | | | |
| ELECTRICAL | | | | | | | | |
| E0 | ELECTRICAL LEGEND AND NOTES | X | | | | | | |
| E1 | ELECTRICAL ONE-LINE DIAGRAM | X | | | | | | |
| VIDEO BOARDS | | | | | | | | |
| V200 | ELECTRICAL INDEX AND NOTES | X | | | | | | |
| V201 | ELECTRICAL RISER DIAGRAMS | X | | | | | | |
| V300 | INDEX AND NOTES | X | | | | | | |
| V301 | FRONT ELEVATION VIEW | X | X | | | | | |
| V302 | REAR ELEVATION VIEW | X | X | | | | | |
| V303 | PLAN VIEWS | X | | | | | | |
| V304 | SECTION VIEWS | X | | | | | | |
| V305 | STRUCTURE ELEVATION | X | | | | | | |
| V306 | DISPLAY DETAILS | X | | | | | | |
| V307 | AUDIO SHOP DRAWING | X | | | | | | |
| V500 | AUDIO - ELECTRICAL NOTES AND INDEX | X | | | | | | |
| V501 | AUDIO - RISER PLAN VIEW | X | | | | | | |
| V502 | AUDIO - AMP/SPEAKER SCHEMATIC | X | | | | | | |
| V503 | AUDIO - CONTROL SCHEMATIC | X | | | | | | |
| V504 | AUDIO - RACK ELEVATIONS | X | | | | | | |
| AUDIO | | | | | | | | |
| AV000 | GENERAL NOTES, LEGENDS | X | | | | | | |
| AV001 | GENERAL NOTES, LEGENDS | X | | | | | | |
| AV090 | A-V EQUIPMENT RACK DETAILS | X | | | | | | |
| AV1100 | A-V FUNCTIONAL LEGEND, STANDARD DETAILS | X | | | | | | |
| AV1101 | A-V FUNCTIONAL LEGEND, STANDARD DETAILS | X | | | | | | |
| AV1112 | FUNCTIONALS | X | | | | | | |
| AV1190 | DEMOLITION PLAN | X | | | | | | |
| AV1191 | SCOREBOARD LOUDSPEAKERS | X | | | | | | |
| AV1192 | LOUDSPEAKER AIMING DETAIL | X | | | | | | |
| AT&T - FOR REFERENCE | | | | | | | | |
| A5.01 | NORTH END SCOREBOARD ELEVATION | X | | | | | | |
| A6.01 | SCOREBOARD ANTENNA LAYOUT | X | | | | | | |

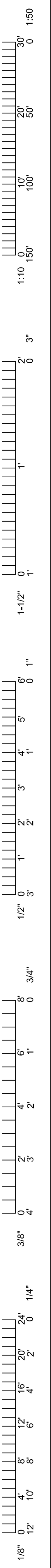
PROJECT ADDRESS

Memorial Stadium, 1100 South Providence Road, Columbia, MO.

PROJECT DESCRIPTION

Removal of existing field-side video board, scoreboard and ribbon board; removal of existing street-side video board; selective demolition of existing audio system in accordance with new system; selective demolition of existing formed metal wall panels and associated trim.

New structural framing and catwalk at east and west ends of existing structure/catwalk for attachment of and access to new field-side and street-side video boards; modifications to audio system; covering of exposed structure/catwalk with formed metal wall panels matching existing; enclosing top of new structure with standing seam metal roof matching existing and bottom of new catwalk with bird control netting.



03/22/2024 BID DOCUMENTS
04/12/2024 ADDENDUM-01
DRAWN BY: [Signature]
CHECKED BY: IRV

MEMORIAL STADIUM
COLUMBIA, BOONE COUNTY, MISSOURI 65211
NORTH CONCOURSE VIDEO BOARD REPLACEMENT
COVER SHEET

PROJECT NUMBER
CP241291
SHEET
G001

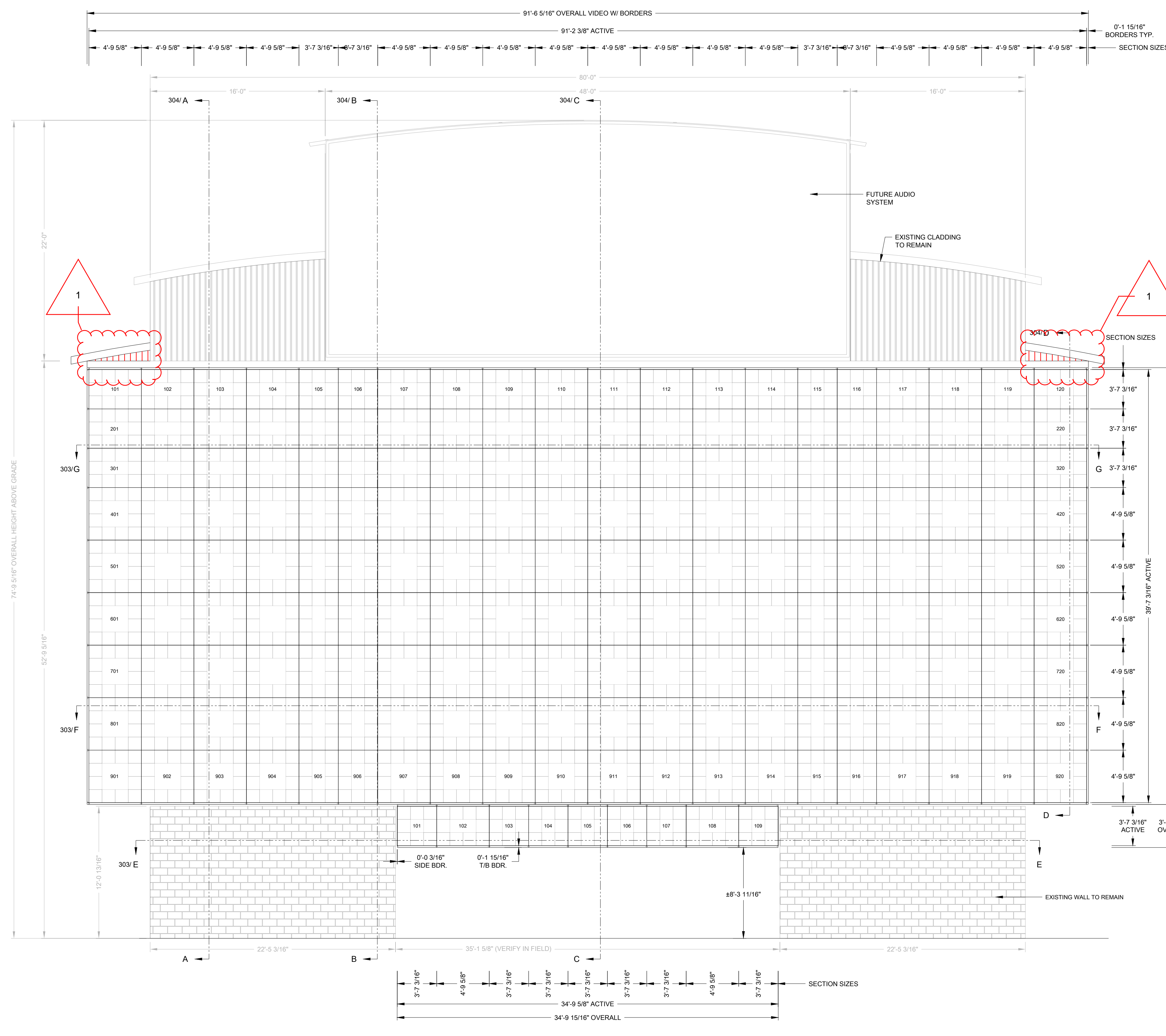
U OF MISSOURI
MEMORIAL STADIUM

MEMORIAL STADIUM
800 E STADIUM BLVD
COLUMBIA, MO 65201

SUBMITTAL APPROVAL

APPROVED APPROVED AS NOTED APPROVED AS NOTED & RESUBMIT
COMPANY: _____
SIGNED: _____
TITLE: _____ DATE: _____

APPROVED FOR CONSTRUCTION



ELEVATION VIEW
FRONT

MAIN DISPLAY
TASK 3320

| SECTION # | SECTION SIZE (HXW-MODS) | SECTION SIZE (HXW-PIXELS) | SECTION WEIGHT (LB) |
|-----------|-------------------------|---------------------------|---------------------|
| 101 | 3X4 | 84X112 | 156 |
| 102 | 3X4 | 84X112 | 156 |
| 103 | 3X4 | 84X112 | 156 |
| 104 | 3X4 | 84X112 | 156 |
| 105 | 3X3 | 84X84 | 117 |
| 106 | 3X3 | 84X84 | 117 |
| 107 | 3X4 | 84X112 | 156 |
| 108 | 3X4 | 84X112 | 156 |
| 109 | 3X4 | 84X112 | 156 |
| 110 | 3X4 | 84X112 | 156 |
| 111 | 3X4 | 84X112 | 156 |
| 112 | 3X4 | 84X112 | 156 |
| 113 | 3X4 | 84X112 | 156 |
| 114 | 3X4 | 84X112 | 156 |
| 115 | 3X3 | 84X84 | 117 |
| 116 | 3X3 | 84X84 | 117 |
| 117 | 3X4 | 84X112 | 156 |
| 118 | 3X4 | 84X112 | 156 |
| 119 | 3X4 | 84X112 | 156 |
| 120 | 3X4 | 84X112 | 156 |
| 201 | 3X4 | 84X112 | 156 |
| 202 | 3X4 | 84X112 | 156 |
| 203 | 3X4 | 84X112 | 156 |
| 204 | 3X4 | 84X112 | 156 |
| 205 | 3X3 | 84X84 | 117 |
| 206 | 3X3 | 84X84 | 117 |
| 207 | 3X4 | 84X112 | 156 |
| 208 | 3X4 | 84X112 | 156 |
| 209 | 3X4 | 84X112 | 156 |
| 210 | 3X4 | 84X112 | 156 |
| 211 | 3X4 | 84X112 | 156 |
| 212 | 3X4 | 84X112 | 156 |
| 213 | 3X4 | 84X112 | 156 |
| 214 | 3X4 | 84X112 | 156 |
| 215 | 3X3 | 84X84 | 117 |
| 216 | 3X3 | 84X84 | 117 |
| 217 | 3X4 | 84X112 | 156 |
| 218 | 3X4 | 84X112 | 156 |
| 219 | 3X4 | 84X112 | 156 |
| 220 | 3X4 | 84X112 | 156 |
| 301 | 3X4 | 84X112 | 156 |
| 302 | 3X4 | 84X112 | 156 |
| 303 | 3X4 | 84X112 | 156 |
| 304 | 3X4 | 84X112 | 156 |
| 305 | 3X3 | 84X84 | 117 |
| 306 | 3X3 | 84X84 | 117 |
| 307 | 3X4 | 84X112 | 156 |
| 308 | 3X4 | 84X112 | 156 |
| 309 | 3X4 | 84X112 | 156 |
| 310 | 3X4 | 84X112 | 156 |
| 311 | 3X4 | 84X112 | 156 |
| 312 | 3X4 | 84X112 | 156 |
| 313 | 3X4 | 84X112 | 156 |
| 314 | 3X4 | 84X112 | 156 |
| 315 | 3X3 | 84X84 | 117 |
| 316 | 3X3 | 84X84 | 117 |
| 317 | 3X4 | 84X112 | 156 |
| 318 | 3X4 | 84X112 | 156 |
| 319 | 3X4 | 84X112 | 156 |
| 320 | 3X4 | 84X112 | 156 |

CLOSED CAPTIONING
TASK 3310

| SECTION # | SECTION SIZE (HXW-MODS) | SECTION SIZE (HXW-PIXELS) | SECTION WEIGHT (LB) |
|-----------|-------------------------|---------------------------|---------------------|
| 101 | 3X3 | 84X84 | 117 |
| 102 | 3X4 | 84X112 | 156 |
| 103 | 3X3 | 84X84 | 117 |
| 104 | 3X3 | 84X84 | 117 |
| 105 | 3X3 | 84X84 | 117 |
| 106 | 3X3 | 84X84 | 117 |
| 107 | 3X3 | 84X84 | 117 |
| 108 | 3X4 | 84X112 | 156 |
| 109 | 3X3 | 84X84 | 117 |

| # OF SECTIONS | DISPLAY SIZE (HXW-MODS) | DISPLAY SIZE (HXW-PIXELS) | TOTAL WEIGHT (LB) |
|---------------|-------------------------|---------------------------|-------------------|
| 9 | 3X28 | 84X812 | 1131 |

| DVX-2102-13HD-84X812 TOTALS | | | |
|-----------------------------|-------------------------|---------------------------|-------------------|
| # OF SECTIONS | DISPLAY SIZE (HXW-MODS) | DISPLAY SIZE (HXW-PIXELS) | TOTAL WEIGHT (LB) |
| 180 | 33X76 | 924X2128 | 32604 |

| | | | |
|-----|-----|---------|-----|
| 401 | 4X4 | 112X112 | 208 |
| 402 | 4X4 | 112X112 | 208 |
| 403 | 4X4 | 112X112 | 208 |
| 404 | 4X4 | 112X112 | 208 |
| 405 | 4X3 | 112X84 | 156 |
| 406 | 4X3 | 112X84 | 156 |
| 407 | 4X4 | 112X112 | 208 |
| 408 | 4X4 | 112X112 | 208 |
| 409 | 4X4 | 112X112 | 208 |
| 410 | 4X4 | 112X112 | 208 |
| 411 | 4X4 | 112X112 | 208 |
| 412 | 4X4 | 112X112 | 208 |
| 413 | 4X4 | 112X112 | 208 |
| 414 | 4X4 | 112X112 | 208 |
| 415 | 4X3 | 112X84 | 156 |
| 416 | 4X3 | 112X84 | 156 |
| 417 | 4X4 | 112X112 | 208 |
| 418 | 4X4 | 112X112 | 208 |
| 419 | 4X4 | 112X112 | 208 |
| 420 | 4X4 | 112X112 | 208 |
| 501 | 4X4 | 112X112 | 208 |
| 502 | 4X4 | 112X112 | 208 |
| 503 | 4X4 | 112X112 | 208 |
| 504 | 4X4 | 112X112 | 208 |
| 505 | 4X3 | 112X84 | 156 |
| 506 | 4X3 | 112X84 | 156 |
| 507 | 4X4 | 112X112 | 208 |
| 508 | 4X4 | 112X112 | 208 |
| 509 | 4X4 | 112X112 | 208 |
| 510 | 4X4 | 112X112 | 208 |
| 511 | 4X4 | 112X112 | 208 |
| 512 | 4X4 | 112X112 | 208 |
| 513 | 4X4 | 112X112 | 208 |
| 514 | 4X4 | 112X112 | 208 |
| 515 | 4X3 | 112X84 | 156 |
| 516 | 4X3 | 112X84 | 156 |
| 517 | 4X4 | 112X112 | 208 |
| 518 | 4X4 | 112X112 | 208 |
| 519 | 4X4 | 112X112 | 208 |
| 520 | 4X4 | 112X112 | 208 |
| 601 | 4X4 | 112X112 | 208 |
| 602 | 4X4 | 112X112 | 208 |
| 603 | 4X4 | 112X112 | 208 |
| 604 | 4X4 | 112X112 | 208 |
| 605 | 4X3 | 112X84 | 156 |
| 606 | 4X3 | 112X84 | 156 |
| 607 | 4X4 | 112X112 | 208 |
| 608 | 4X4 | 112X112 | 208 |
| 609 | 4X4 | 112X112 | 208 |
| 610 | 4X4 | 112X112 | 208 |
| 611 | 4X4 | 112X112 | 208 |
| 612 | 4X4 | 112X112 | 208 |
| 613 | 4X4 | 112X112 | 208 |
| 614 | 4X4 | 112X112 | 208 |
| 615 | 4X3 | 112X84 | 156 |
| 616 | 4X3 | 112X84 | 156 |
| 617 | 4X4 | 112X112 | 208 |
| 618 | 4X4 | 112X112 | 208 |
| 619 | 4X4 | 112X112 | 208 |
| 620 | 4X4 | 112X112 | 208 |
| 701 | 4X4 | 112X112 | 208 |
| 702 | 4X4 | 112X112 | 208 |
| 703 | 4X4 | 112X112 | 208 |
| 704 | 4X4 | 112X112 | 208 |
| 705 | 4X3 | 112X84 | 156 |
| 706 | 4X3 | 112X84 | 156 |
| 707 | 4X4 | 112X112 | 208 |
| 708 | 4X4 | 112X112 | 208 |
| 709 | 4X4 | 112X112 | 208 |
| 710 | 4X4 | 112X112 | 208 |
| 711 | 4X4 | 112X112 | 208 |
| 712 | 4X4 | 112X112 | 208 |
| 713 | 4X4 | 112X112 | 208 |
| 714 | 4X4 | 112X112 | 208 |
| 715 | 4X3 | 112X84 | 156 |
| 716 | 4X3 | 112X84 | 156 |
| 717 | 4X4 | 112X112 | 208 |
| 718 | 4X4 | 112X112 | 208 |
| 719 | 4X4 | 112X112 | 208 |
| 720 | 4X4 | 112X112 | 208 |
| 801 | 4X4 | 112X112 | 208 |
| 802 | 4X4 | 112X112 | 208 |
| 803 | 4X4 | 112X112 | 208 |
| 804 | 4X4 | 112X112 | 208 |
| 805 | 4X3 | 112X84 | 156 |
| 806 | 4X3 | 112X84 | 156 |
| 807 | 4X4 | 112X112 | 208 |
| 808 | 4X4 | 112X112 | 208 |
| 809 | 4X4 | 112X112 | 208 |
| 810 | 4X4 | 112X112 | 208 |
| 811 | 4X4 | 112X112 | 208 |
| 812 | 4X4 | 112X112 | 208 |
| 813 | 4X4 | 112X112 | 208 |
| 814 | 4X4 | 112X112 | 208 |
| 815 | 4X3 | 112X84 | 156 |
| 816 | 4X3 | 112X84 | 156 |
| 817 | 4X4 | 112X112 | 208 |
| 818 | 4X4 | 112X112 | 208 |
| 819 | 4X4 | 112X112 | 208 |
| 820 | 4X4 | 112X112 | 208 |
| 901 | 4X4 | 112X112 | 208 |
| 902 | 4X4 | 112X112 | 208 |
| 903 | 4X4 | 112X112 | 208 |
| 904 | 4X4 | 112X112 | 208 |
| 905 | 4X3 | 112X84 | 156 |
| 906 | 4X3 | 112X84 | 156 |
| 907 | 4X4 | 112X112 | 208 |
| 908 | 4X4 | 112X112 | 208 |
| 909 | 4X4 | 112X112 | 208 |
| 910 | 4X4 | 112X112 | 208 |
| 911 | 4X4 | 112X112 | 208 |
| 912 | 4X4 | 112X112 | 208 |
| 913 | 4X4 | 112X112 | 208 |
| 914 | 4X4 | 112X112 | 208 |
| 915 | 4X3 | 112X84 | 156 |
| 916 | 4X3 | 112X84 | 156 |
| 917 | 4X4 | 112X112 | 208 |
| 918 | 4X4 | 112X112 | 208 |
| 919 | 4X4 | 112X112 | 208 |
| 920 | 4X4 | 112X112 | 208 |

04/12/2024 ADDENDUM-01

| REV | DATE | DESCRIPTION | BY |
|-----|---------|-----------------------------------------------------|-----|
| 02 | 28MAR24 | REVISED TITLE BLOCK TO BE APPROVED FOR CONSTRUCTION | JAL |
| 01 | 19FEB24 | REVISIONS MADE PER CUSTOMER COMMENTS AND EDR REVIEW | JAL |

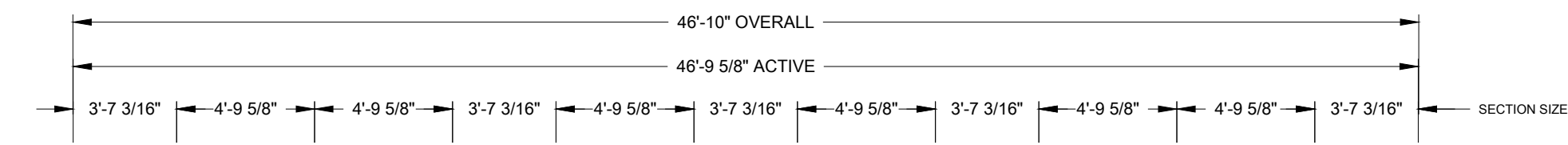
APPROVED APPROVED AS NOTED APPROVED AS NOTED & RESUBMIT

COMPANY: _____

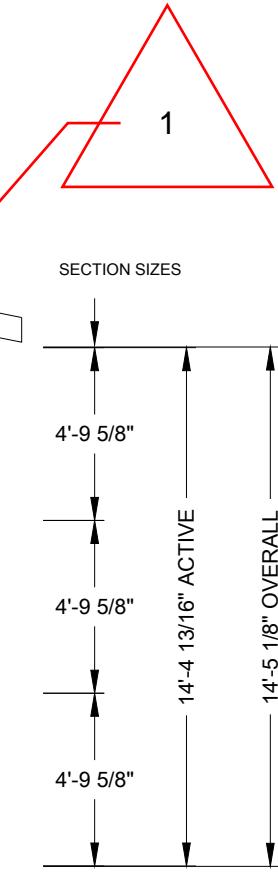
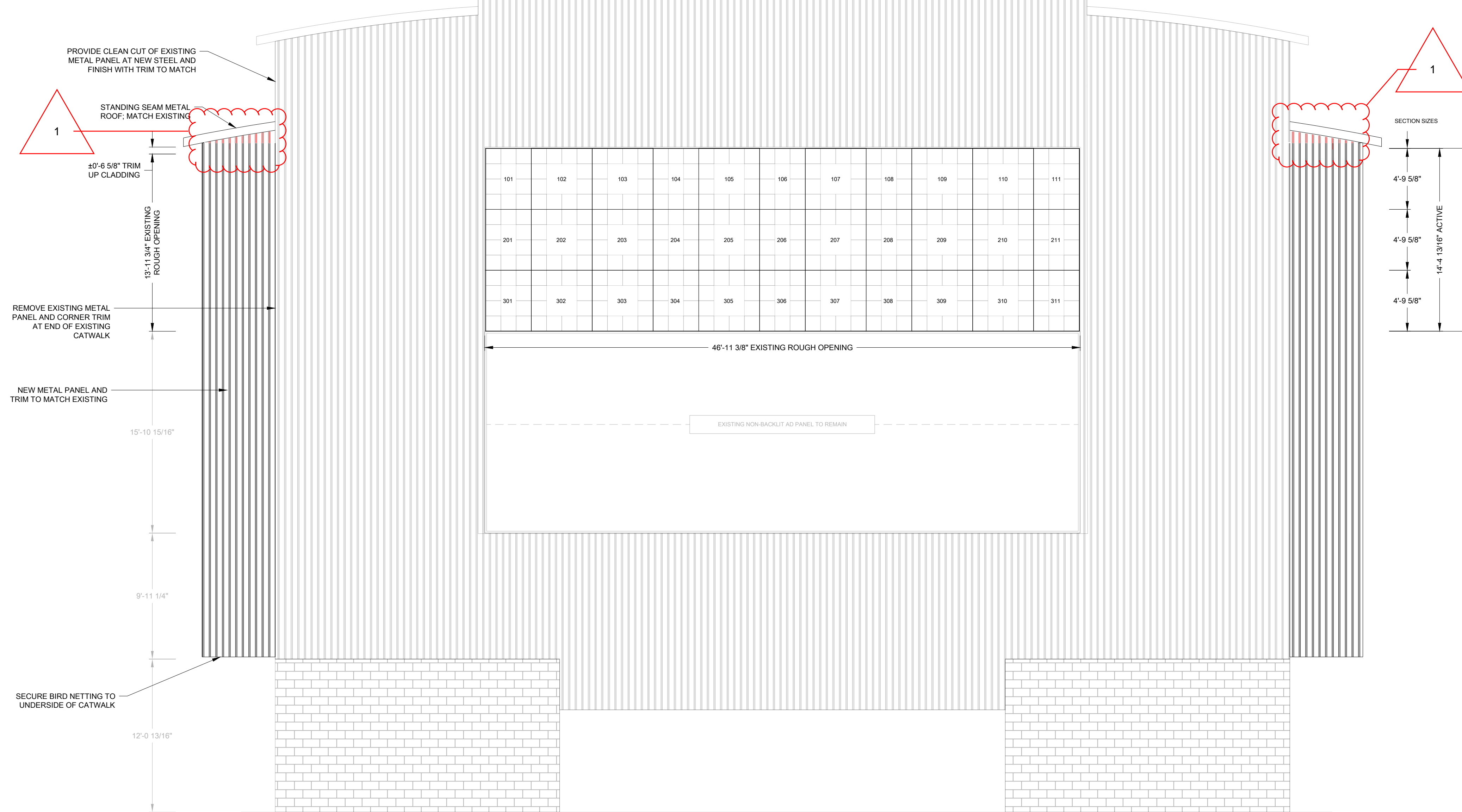
SIGNED: _____

TITLE: _____ DATE: _____

APPROVED FOR CONSTRUCTION



INSTALLATION NOTES:
1. THERE IS AN AT&T DAS ANTENNA LOCATED ON THE EAST SIDE BELOW THE EXHAUST FANS. IT WILL NEED TO BE REMOVED TEMPORARILY BY THE CELLULAR VENDOR AND REINSTALLED AT THE NEW EAST END. THIS WILL NEED TO BE COORDINATED WITH THE GC, OWNER'S REPRESENTATIVE AND CELLULAR CONTRACTOR.
2. THERE WILL BE SELECTIVE DEMOLITION OF THE METAL PANEL AT THE EAST AND WEST ENDS. IT WILL REQUIRE CUTTING PANELS AT THE TOP OF THE BOARD AND MODIFYING THE TRIM AT THE CORNERS.
3. THERE WILL BE METAL PANELS AT THE NEW EAST AND WEST ENDS AND REAR.



REAR BILLBOARD
TASK 3300

| SECTION # | SECTION SIZE (HXW-MODS) | SECTION SIZE (HXW-PIXELS) | SECTION WEIGHT (LB) |
|--------------------------------------|-------------------------|---------------------------|---------------------|
| 101 | 4X3 | 112X84 | 156 |
| 102 | 4X4 | 112X112 | 208 |
| 103 | 4X4 | 112X112 | 208 |
| 104 | 4X3 | 112X84 | 156 |
| 105 | 4X4 | 112X112 | 208 |
| 106 | 4X3 | 112X84 | 156 |
| 107 | 4X4 | 112X112 | 208 |
| 108 | 4X3 | 112X84 | 156 |
| 109 | 4X4 | 112X112 | 208 |
| 110 | 4X4 | 112X112 | 208 |
| 111 | 4X3 | 112X84 | 156 |
| 201 | 4X3 | 112X84 | 156 |
| 202 | 4X4 | 112X112 | 208 |
| 203 | 4X4 | 112X112 | 208 |
| 204 | 4X3 | 112X84 | 156 |
| 205 | 4X4 | 112X112 | 208 |
| 206 | 4X3 | 112X84 | 156 |
| 207 | 4X4 | 112X112 | 208 |
| 208 | 4X3 | 112X84 | 156 |
| 209 | 4X4 | 112X112 | 208 |
| 210 | 4X4 | 112X112 | 208 |
| 211 | 4X3 | 112X84 | 156 |
| 301 | 4X3 | 112X84 | 156 |
| 302 | 4X4 | 112X112 | 208 |
| 303 | 4X4 | 112X112 | 208 |
| 304 | 4X3 | 112X84 | 156 |
| 305 | 4X4 | 112X112 | 208 |
| 306 | 4X3 | 112X84 | 156 |
| 307 | 4X4 | 112X112 | 208 |
| 308 | 4X3 | 112X84 | 156 |
| 309 | 4X4 | 112X112 | 208 |
| 310 | 4X4 | 112X112 | 208 |
| 311 | 4X3 | 112X84 | 156 |
| DVX-2102-13HD-336X1092 TOTALS | | | |
| # OF SECTIONS | DISPLAY SIZE (HXW-MODS) | DISPLAY SIZE (HXW-PIXELS) | TOTAL WEIGHT (LB) |
| 33 | 12X39 | 336X1092 | 6084 |

ELEVATION VIEW
REAR

04/12/2024 ADDENDUM-01

| REV | DATE | REVISION | BY |
|-----|---------|--------------------------------------------------------------------|-----|
| 02 | 28MAR24 | REVISED TITLE BLOCK TO BE APPROVED FOR CONSTRUCTION AND EDP REVIEW | JAL |
| 01 | 19FEB24 | REVISIONS MADE PER CUSTOMER COMMENTS AND EDP REVIEW | JAL |

THE CONTRACTOR VERIFIES AND IS FULLY RESPONSIBLE FOR THE ACCURACY OF ALL DIMENSIONS AND INFORMATION SHOWN ON THIS DRAWING. THE CONTRACTOR SHALL BE RESPONSIBLE FOR OBTAINING ALL NECESSARY PERMITS AND APPROVALS. THE CONTRACTOR SHALL BE RESPONSIBLE FOR OBTAINING ALL NECESSARY PERMITS AND APPROVALS. THE CONTRACTOR SHALL BE RESPONSIBLE FOR OBTAINING ALL NECESSARY PERMITS AND APPROVALS.

| PROJECT | TITLE | DATE | SCALE | DRAWN | CHECKED | DATE | SCALE | UNITS | SHEET | REV |
|---------------|------------------------------|---------|----------|----------|----------|---------|----------|----------------------|-------|-----|
| U OF MISSOURI | SHOP 302 REAR ELEVATION VIEW | 04DEC23 | 3/16"=1' | JLOVSETH | JLOVSETH | 04DEC23 | 3/16"=1' | INCHES (MILLIMETERS) | V302 | 02 |
| | | | | | | | | DO NOT SCALE DRAWING | | |
| | | | | | | | | | | |